

***Coomaniella (Coomaniella) janka* sp. nov. from China (Coleoptera: Buprestidae)**

EDUARD JENDEK

Institute of Zoology, Slovak Academy of Sciences, Dúbravská cesta 9, SK-842 06 Bratislava, Slovakia
E-mail: jendek@stonline.sk

Abstract

Coomaniella (Coomaniella) janka sp. nov. from China, Henan province, is described. This species belongs to the *Coomaniella macropus* species group with a close relation to *Coomaniella (Coomaniella) lao* Jendek & Kalashian, 1999.

Key words: Taxonomy, new species, Coleoptera, Buprestidae, *Coomaniella*, China

Introduction

The genus *Coomaniella* Bourgoïn, 1924 represents the single genus of the tribe Coomaniellini Bílý, 1974. The distribution of this genus is restricted to the regions of south and southeastern Asia. A revision of *Coomaniella* was recently published by Jendek & Kalashian (1999).

This contribution describes a new species of the subgenus *Coomaniella* from the Chinese province of Henan. Abbreviations for collections are:

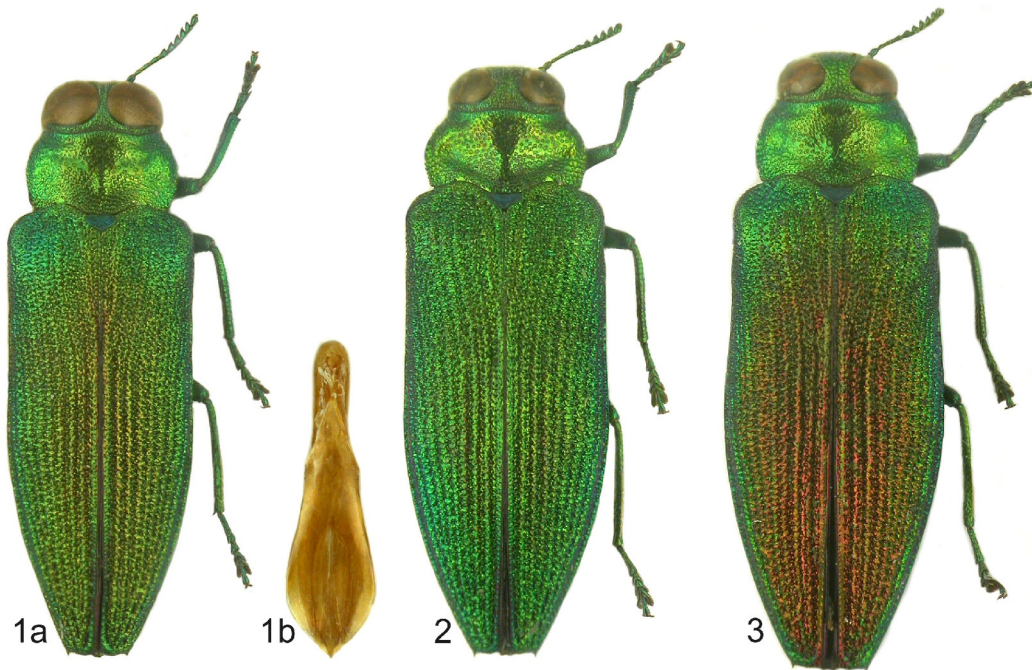
EJCB Collection of E. Jendek, Slovak Academy of Sciences, Bratislava, Slovakia
EKCS Collection of E. Kučera, Soběslav, Czech Republic
VKCB Collection of V. Kubáň, Brno, Czech Republic.

***Coomaniella (Coomaniella) janka* sp. nov. (Figs. 1–3)**

Type specimens. Holotype ♂ (EJCB): “CHINA — HENAN, Xuejiaying-Yawu mts. [34°31'N, 110°29'E] 15.5.-19.5.2004”. Paratypes: 10 ♂♂ and 5 ♀♀ from the same locality (EJCB, EKCS, VKCB).

Description of the holotype. Body robust, convex, golden-green. Head large, distinctly wider than anterior margin of pronotum; eyes strongly convex and large, nearly holoptic and separated on vertex in narrowest part by 1–2 rows of punctures; frons feebly convex, slightly impressed medially, irregularly and moderately foveolate, somewhere with irregular glabrous portions; vertex densely foveolate, each foveola with central semierect pale seta; antennae rather long; antennomeres 1 and 2 swollen, 1 coniform, 2 globoid, 3–5 filiform, 6–11 serrate.

Pronotum transverse, 1.9 times as wide as long, widest at middle; anterior margin with distinct arcuate central lobe; sides strongly arcuate, with crenulate margins; hind corners obtuse; posterior margin distinctly wider than anterior, bisinuate, with rather narrow medial lobe; disk with narrow, submarginal impression anteriorly and with two oblique, large and deep impressions laterally, that are narrowly separated medially; surface laterally densely foveate, anterior and posterior margins densely foveolate; each fovea or foveola with semierect pale seta; elevated portions of disk sparsely foveolate, with distinct, glabrous interspaces; scutellum microreticulate, cordiform, distinctly impressed anteromedially.



FIGURES 1–3. *Coomaniella (Coomaniella) janka* sp. nov.: 1a) holotype, ♂, 8.9 mm; 1b) aedeagus of the holotype, 2.1 mm; 2) paratype, ♀, 9.1 mm; 3) paratype, ♀, chromatic variety, 9.6 mm.

Elytra 2.44 as long as wide, across humeral part distinctly wider than widest part of pronotum; humeri very prominent; sides in basal two thirds subparallel, then narrowed arcuately to wide subtruncate apices; sutural and lateral corners of apices projecting to

small spine; interspace between spines almost straight; disk with distinct longitudinal striae, intestriae feebly convex, densely rugose; elytra with rather indistinct sparse, pale pubescence and row of setae on elevated adsutural part; epipleura widest in humeral part, then narrowly extending to lateral spines of elytral apices.

Underside sparsely covered with whitish pubescence, more dense medially, on apex of abdomen and femora; prosternal process flat, densely punctate, subparallel between coxae, then subarcuately tapering to narrow tip; inner posterior angle of metacoxal plates subangulate; last ventrite without impressions on disk, apex truncate with very fine denticles on lateral corners.

Aedeagus (Fig. 1b): Membraneous, without distinctive characters.

Sexual dimorphism. In male eyes nearly holoptic and separated on vertex in narrowest part by 1–2 rows of punctures, in female by 5–6 rows of punctures. In male antennae longer than in female and reach almost to middle of pronotum. In male protarsomere 1 with long spine on outer angle extending to half length of protarsomere 2; body of protarsomere 1 about 3 times longer than length of spine; mesotarsomere 1 weakly incrassate, without spinate angle, about as long as tarsomeres 2–4 together; apex of metafemur armed with long, sharp spur. In female protarsomere 1 without spinate outer angle; mesotarsomere 1 not incrassate. Metatarsi similar in both sexes; metatarsomere 1 about as long as tarsomeres 2–4 together.

Variability. In one female specimen elytra are with reddish-carmine tinge except in basal and epipleural portions.

Measurements. Length: 8.9 mm holotype, 8.2–9.5 mm ($\sigma\sigma$), 8.8–9.7 mm ($\varphi\varphi$); width: 2.9 mm holotype, 2.5–3.0 mm ($\sigma\sigma$), 2.9–3.3 mm ($\varphi\varphi$). Elytral length to width ratio: 2.30–2.52 ($\sigma\sigma$), 2.31–2.40 ($\varphi\varphi$).

Diagnosis. *Coomaniella* (*Coomaniella*) *janka* **sp. nov.** is distinguished from all congeneric relatives by the very narrow pronotum and by the golden-green color.

According to the characters cited in the recent revision (Jendek & Kalashian, 1999): well marked elytral striae and rugoso-punctate elytra, this species belongs to the subgenus *Coomaniella*. The presence of distinct sexual dimorphism, darkly metallic-colored antennae and tarsi, less prolonged elytra, bidentate apices, lack of spine on metacoxal plate and spinate protarsomere 1 on outer margin, place *Coomaniella* (*Coomaniella*) *janka* **sp. nov.** in the *Coomaniella macropus* species group. By uniform color, weakly incrassate mesotarsomere 1 without spinate inner angle, this species is closely related to *Coomaniella* (*Coomaniella*) *lao* Jendek & Kalashian, 1999, from which it can be distinguished by its larger size, golden-green color and narrow pronotum.

Etymology. The name “janka” (a noun in apposition in the nominative case) is derived from the forename of my girlfriend Janka Polláková.

Remarks. All species were collected during a hot sunny day flying to leaves of *Rhus* sp. No larval galleries were found, but it is possible that this tree is at least an adult host plant of this species.

Acknowledgements

I would like to thank E. Kučera (Soběslav, Czech Republic) who kindly provided me with the material and two anonymous reviewers who reviewed the manuscript.

References

- Bílý, S. (1974) A revision of the genus *Coomaniella* Bourgoïn of the Coomaniellini tribe nov. (Coleoptera, Buprestidae). *Acta entomologica bohemoslovaca*, 71, 30–41.
- Bourgoïn, A. (1924) Diagnoses préliminaires de Buprestides nouveaux de l'Indochine française. *Bulletin de la Société Entomologique de France*, 1924, 178–179.
- Jendek, E. & Kalashian, M. (1999) Revision of the genus *Coomaniella* (Coleoptera: Buprestidae). *Entomological Problems*, 30, 9–36.